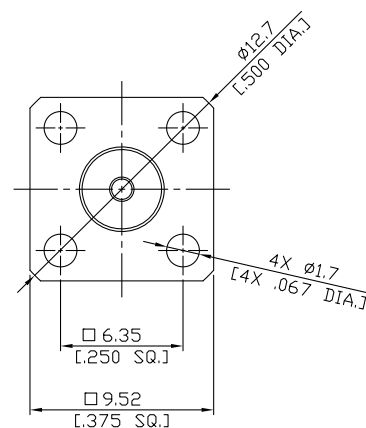
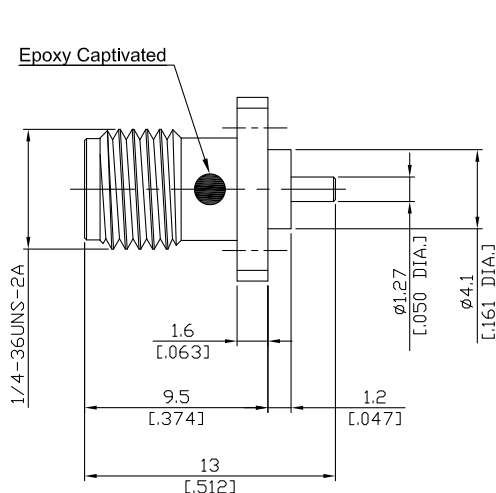


## SMA(Female) Straight Panel Receptacle Jack Coaxial End

### SMA2GFA50-1300B-EC/91



All dimensions are in mm [inch]

Tolerances according to DIN ISO 2768-mH

#### Interface

According to

IEC 60169-15; MIL-STD-348A/310

#### Electrical Data

Impedance

50 Ω

Frequency

DC to 18 GHz

VSWR (Return Loss)

≤ 1.25 (≥ 19.08 dB)

Insertion Loss

≤ 0.04 x √F (GHz) dB

#### Mechanical Data

Coupling mechanisms

Screw-lock

Weight

N/A

#### Environmental Data

Temperature range

-65°C to +165°C

RoHS

compliant

#### Material And Plating

Piece Parts	Material	Plating
Centre contact	Beryllium Copper	Gold plating(Nickel underplated)
Body	Brass	Gold plating(Nickel underplated)
Insulator	PTFE	

#### Packing

Single or 100

#### Related Document

Mounting Dimension

MD71